



e KINswoman

A Publication of Indiana-Kentucky Women of the ELCA • Volume 20 • Number 2 • Summer 2007

SENT BY GOD'S GRACE
FOR THE SAKE OF THE WORLD



Those were almost the only empty seats in Fort Wayne's Grand Wayne Center June 8-10, as delegates, clergy, and visitors joined together in worship, learning and fellowship. (www.iksynod.org)



And your president could be found, when she wasn't in a plenary session; listening to keynote speaker, the dynamic Rev. Ruben Duran; or participating in an awesome worship service, your president was doing what she always does—promoting IK Women of the ELCA, and, specifically, the IK SWO Biennial Convention, which will take place Friday and Saturday, July 27 & 28, at Adam's Mark in Indianapolis.

I joined Jill at our booth, and met all sorts of wonderful women. However, most had one thing in common: They hadn't received all that information—all that good stuff we've been sending to the congregations! Many of them were interested, but uninformed.

It occurred to me that almost every church is represented at the annual IK Assembly; why, then, could not each church be represented at the assembly every two years of IK women?

It can happen! If you haven't made plans yet to at-



Above: Jill chats with Mary Poston, interim pastor at St. Mark's in Evansville.

tend, information is included in this special edition of the *KINswoman*. Call or email René, Jill, or any board member if you need more info; or you can check the last issue of *KINswoman* posted online. Just search **KINswomanFebruary 2007**, and it will bring it right up.

If you'd like to say goodbye to Terri Dillon, who is retiring as Director of Outreach and Evangelism effective September 1, 2007, you may contribute to a memory book and/or a synod gift in appreciation for her years of service by 9/1. For more information, contact the synod office, 911 E. 86th St., Indianapolis, IN 46240, or iksynod.org.



Left: Lillie McElroy seems to be really excited about the chance to be a delegate to 2008 Triennial in Salt Lake City, while Rita Walls, CU president, looks on. Both attend Bethel in Gary.



Summertime and the living is easy...

And many groups go dormant.

"Kids are out of school...people are on vacation..."

*That's true, but there are many women left in town, and the easy, relaxed summer atmosphere may be a great backdrop for growth. How about a... **Summer Circle?** Summer may be the only time teachers can participate. Plus, it's a great time to invite young women to a special spiritual gathering. Welcome the kids. Let them play, roughhouse... while the women **Grow, Commune, and Act Boldly...***

- *Women could meet at each other's homes and do the Bible studies. Check your current LWT, or download copies at www.lutheranwomantoday.org/bible/ for women who do not yet have a subscription*
- *Have a **Growth** party. Invite women to your backyard—or the beach (How many times did Jesus gather the crowds at the lake?) or park. Everyone brings something—drinks, tableware, salad, blanket... and a plant, preferably perennial, for exchanging. Have Bible study materials available, or plan a mini retreat*



*Days are longer. You don't have to worry about driving after dark... or getting home before the street lights go on. There's more to summer than rummage sales, so take advantage of God's gift of Summer and "Act **BOLDLY** on your faith in Jesus Christ!"*

The **KINswoman**

The **KINswoman** newsletter is a publication of the Indiana-Kentucky Women of the Evangelical Lutheran Church of America (ELCA). This publication facilitates communications of the I-K Women of the ELCA by sharing ideas and programs of individuals, as well as our Clusters, Congregational Units and (SWO) Board.

The **KINswoman** is published 3-4 times a year by the Synodical Women's Organization of Indiana-Kentucky Women of the ELCA, Jill Watson, President, and online at <http://iksynod.org/ministry/WELCA/WELCA.asp>

Send all articles, photos, questions, or subscription requests to

Dorothy Nevils, Editor
575 Johnson Street
Gary, IN 46402

Email: maslivend@sbcglobal.net
Phone: 219-886-0201

Permission to photocopy this publication for distribution is given for all ELCA members and Women of the ELCA. All others must cite attribution of publication.

2005-2007 Board of Women of the ELCA in Indiana-Kentucky Synod

Jill Watson, President
1641 Scarlet Oak Drive
Jasper, IN 47546; 812-634-9244
jill.watson1@insightbb.com

Astrid Richwine, Vice-president
Partnered with NE (3) & EC (6)
Box 134
Van Buren, IN 46991; 765-934-3505
rock@comteck.com

Carol Wagner, Secretary
1497 Lakewood Lane.
Schererville, IN 46375; 219-865-9756.
Momwags007@aol.com

Mary Glasscock, Treasurer
212 Dorchester Road
Louisville, KY 40223; 502-425-7997
maryj@glasscock.com

Florence Bright, Finance
Partnered with SC (9)
2619 Lindsay Avenue
Louisville, KY 40206; 502-897-7367
fbright@yahoo.com

Barbara Dietz, Leadership
Partnered with NC (2)
1917 Denslow Dr.
South Bend, IN 46614; 574-299-0117
bdietz59@sbcglobal.net

Helen Garvey, Mission projects
Partnered with SE (7)
5347 Country Club Lane
Burlington, KY 41005; 859-689-4965
(Winter: 843-249-8426)
Ggarvey1@wmconnect.com

Marilyn Saum, Cluster Facilitator
Partnered with LAF (4)
255 Harrah St.
Worthington, IN 47471; 812-875-2737
mraum@indiana.edu

Rene Siria, Convention
Partnered with EK (10)
108 Old Station Road
Frankfort, KY 40601; 502-848-4299
renersiria@yahoo.com

Darla Werner, Communication
Partnered with INDPLS (5)
5915 Budd Run Court
Indianapolis, IN 46250; 317-576-9347
dwerner9164@sbcglobal.net

Diann Zehr, Mission resources
Partnered with EVANS (8)
1905 Medical Art Dr. Apt.3D
Huntingburg, IN 47542; 812-683-4512

Come on down (or up, or over)! It's time for

“Acting Boldly in Christ”

Where else can you enjoy wall to wall women, all centered on Christ?

When else can you be spiritually stirred and puffed up by Bishop Stuck?

How else can you learn about and impact the mission of Women of the ELCA?

Join us at Adam's Mark, 2544 Executive Drive, Indianapolis, July 27—28

Business:

- Elect delegates to the 2008 Triennial in Salt Lake City, Utah, to speak for the women in our synod.
- Elect a board and president, vice president, secretary, and treasurer to serve for the next two years.
- Approve a budget to operate over the next year
- Consider resolutions to determine the course of our organization

Enlightenment:

- Participate in workshops to increase our understanding and stretch our horizons
- Witness the power of the Word in our role of discipleship through Bible study
- Realize the power of unity in addressing injustice toward humanity
- Discover resources and new perspectives in living out our discipleship in Jesus Christ.

Fellowship:

- Meet and make new friends for life, while re-connecting with friends of old
- Entertain and be entertained by women from the top of Indiana to the bottom of Kentucky
- Share opinions, trade secrets, and photos of loved ones in the hall, at lunch, or waiting in “the line”
- Trade jokes and talk each other to sleep at a synod-wide sleepover

You don't want to miss this, and we don't want to miss you. If you haven't been in years, it's time to come back; if you've never been, it's time to start. But hurry. We can only hold our rooms until June 26.

There won't be a lot of walking, but bring shoes and clothes that are comfortable. Don't forget a light sweater. If you wish, include a nice outfit for the banquet, although you'll be among friends at your most casual.

See you next month!!!

Becky's Welca'm Home

(Or What's Wrong with This Picture?)

(The following is (hopefully) not a true story. Names have not been changed...just made up. As you read, see how many **wrongs** you can find.)

Attending the IK Synod Assembly earlier in June, Becky stopped by the Women of the ELCA booth, where she was encouraged to attend the convention.

"What convention?" Becky asked.

She was given a flyer and registration blank, and told that each unit sent a delegate and an alternate.

Excited, Becky returned to her church and hunted up Miss

Ledars to tell her about her discovery. She found her after worship, busy with the "kiddie busy bags" arranging the crayons as they appear on the color wheel. Becky recognized the red Joshua had broken trying to color Jesus' hair to match his.

Becky: I didn't know about a women's convention.

Miss Ledars (preoccupied): Nobody was interested.

Becky: I never heard anything about it.

Miss Ledars: It was in the March 11 bulletin.

Becky: It was my mom's birthday and we took Josh to church with his grandma.

Miss Ledars Oh. It's on the purple bulletin board.

Becky: Where?

Miss Ledars Down by the kindergarten class right above the signup for greeters.

Becky: I thought that was about being a *welcoming* volunteer.

Miss Ledars It's Welca.

Becky: *Welca?* (The women hadn't used *that* word)

Miss Ledars Yes. Obviously you don't belong to Welca.

Becky (even more confused): What's that?

Miss Ledars It's the women's auxiliary. We take care of the kitchen, raise money, buy curtains and paraments, and have 4 outings a year.

Becky (dropping her head. The women she'd met didn't seem like that): Oh.

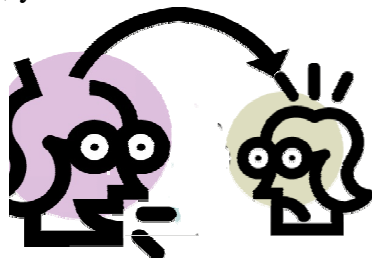
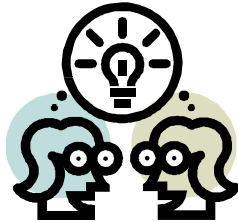
Miss Ledars If you want to join, you can come to our next meeting and sign up.

Becky: When is that?

Miss Ledars: The 3rd Wednesday in September at 2 o'clock.

Becky: I work.

Miss Ledars Oh.



Florence Bright
Finance

Mission Investment Fund

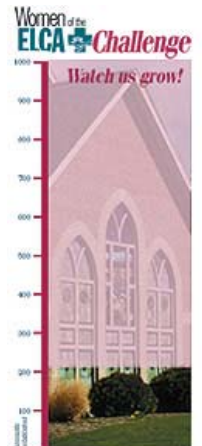
Women of the ELCA has been given a challenge by the ELCA Mission Investment Fund to open 1,000 newaccounts by June 30, 2008, and they will contribute \$25,000 toward the Triennial Gathering in Salt Lake City, Utah, next July. As of March 22, 2007, 158 accounts had been opened, totaling \$271,000 (217 by May 31). So far, Southwest Texas leads all other synodical organizations in number of new accounts.

Information and forms will be available at the Synodical Convention in July. Learn how a Mission Investment Fund can work for you.

LET'S GO, INDIANA-KENTUCKY!

See you at Convention.

Florence



Don't forget our ingathering!

This year's physical offering will be health kit items. Check LWR's Get Involved pamphlet at <http://lwr.org/parish/index.asp> for specifics.

Remember to follow specifications *explicitly*— shelf life, colors, etc.

(You don't need to bring complete kits, or your group's LWR collection (esp. North'ers) to cart all the way back for pickup- *just some items!*)

Also, if you bring a box or two, broken down, that will accommodate 12—15 or so finished kits, we will be grateful; and if you live up north and can transport and store a box or two until October pickups, we'll be even "**thankfuller.**" Heck, we might give you a big ol' kiss!

Contact Helen (ggarvey1@wmconnect.com) or Dorothy

Convention Reminder & Checklist

Convention registration deadline is June 26.

After that date, the registration increases to \$130.00. In addition, the block of rooms reserved for convention will be released, so make sure to **reserve your room by June 26.**

Delegates and alternates must be registered in order to prepare materials and get those materials to them in time for convention.

Every congregation should submit a **nominee for Triennial delegate**, and is encouraged to return nomination forms for board members, also. These forms were **sent to each church in two separate mailings.** Check your mail, or call immediately if you cannot locate them.

Fair Share forms were also sent in the above packets. Fair Share allows churches to share their resources so that all units who wish to be represented are financially able to do so. If you haven't done it for your church, Please do so immediately.

Physical offering will be **Lutheran World Relief health kits.** Bring any items you wish. They will be assembled at the convention. Check the Feb. issue for details, or visit lwr.org. Remember: Purchase **quality** items—dark towels, wide combs, fresh toothpaste, and durable bandages.

One young woman 15—30 from each cluster can receive a Young Woman's Scholarship, and attend convention free.

Each cluster coordinator attends convention free.,. Registration is waived, but she is responsible for food, travel and lodging.

Augsburg Fortress bookstore will be available. You can stock up on gift items, devotional materials, logo items...and of course, those lovely Lucinda pins.

For additional information to prepare for convention, contact the following women:

René Siria: renersiria@yahoo.com or 502-848-4299.
Jill Watson: jill.watson1@insightbb.com or 812- 634-9244
Darla Werner: d Werner9164@sbcglobal.net (re: LWR kits)



Still open for talent!

The curtain's still up, and we will not say NO to women who want to share their talents—or just entertain us.

Mission Challenge for Chile is our mission project through the time of the Convention, July 27th. In February we challenged our units to match an I-K SWO gift of \$1,000.00 to support the preschool ministry of Buen Samaritano Lutheran Church in Santiago, Chile, which is in danger of closing. As indicated in the February KINswoman, working women desperately the child care service to support their families.

News from the Clusters

Northwest—Cluster 1

NW Cluster met at St. Paul in Michigan City. Using the theme, *Put Your Heart into Living Water*, we studied the scriptural significance of water, and increased our physical appreciation of water.



As a justice issue, we learned that bottled water is harmful to 3rd world countries and to the environment, and is inferior, in many cases, to tap water; that increasing the intake of water reduces aches and pain; and

that developments cause water pollution, which leads to deformities in fish, and harms us.

Attendance was lower than usual, with 37 women from 8 congregations in attendance. Physical offering was to the Salvation Army food pantry.

The Cluster coordinator is now Annette Holtan, and Norma Lewis, Mindy Meyer and Dorothy Nevils make up the committee. Our Fall gathering will be at Augustan Hobart, whose renewed activity is celebrated!

Northcentral—Cluster 2

NC Cluster met at Holy Trinity, South Bend, and was well attended. Our president, Jill Watson, attended and shared news of SWO (Synodical Women's Organization) happenings. Using *Stretch and Pray*, by Murray D. Finck, Sharon Engstrom led the Bible study,

which incorporated both physical and spiritual wellness. Guest speaker was from CAPS (Child and Parent Services), an organization that fights child abuse. Our physical offering was a donation of flannel material that will be make into layettes by the women of Gloria Dei, South Bend.



Northcentral's gatherings are always enriching; yet, even while attendance grows for the active churches, getting the remainder of the churches to participate continues to be a struggle.