



The KINswoman

A Publication of Indiana-Kentucky Women of the ELCA • Volume 21 • Number 3 • Summer/Fall 2008

Our mission: To mobilize women to act boldly on their faith in Jesus Christ.



From Our President, Jill Watson

Reduce, Reuse, Recycle...

This is a good idea when it comes to the environment; however I am going to tell you I don't think that it is a good idea for Women of ELCA. I know, at this point my good friend Dorothy Nevils is ready to jump down my throat for suggesting that the Women of ELCA is not interested in pursuing the goals of improving and supporting the earth as God gave it to us to be stewards over the land. No, I'm saying that it is not a *healthy* choice for the way that we **OPERATE** our *organization*.

Let's start on the congregational level. Is your group size "**Reducing**"? Is the number of participants dwindling, or is the level of commitment to the work of your women's group getting *harder to recognize*?

Perhaps you're "**Reusing**" programs from year to year, rather than making changes or additions to your schedule so that you can try *New* things?

Maybe you are "**Recycling**," as well, in your congregational units. You know what I mean—your leadership positions are being passed on from year to year by the *same* women... even when they complain about always having to do everything themselves ...or new women in the organization sit quietly and just let the old leaders continue to lead despite their own talents in these areas?

We are seeing some of the same issues on the synodical level of our organization. We have experienced a reduction in the num-

ber of congregations finding a place within our synodical and church-wide organization, preferring to do their mission work and Bible study without the benefit of our "formal" organization. We are seeing a lack of communication between congregations and the leaders of the Synodical Women's Organization and less of a connection between units and clusters.

Instead of doing things "The Way We've Always Done It," I am asking our units, clusters and the synodical organization to look at these three words in a new way.

REDUCE....burnout. Let us get more women involved in the work that we are called to do together. Share the load, and we will also share the joy.

REUSE...the good ideas and the activities and goals shared by all, but keep yourselves open to new experiences ...with new people, and remember that the old ideas can mix with the new ones to bring success, too.

RECYCLE...the wisdom of others by mentoring with younger (or newer) participants in your women's organization. We don't have to be in charge, but can act as support for those just learning their way. Allow yourselves to stand back and let others use their God-given gifts to benefit the organization. They are God's gifts to you, too. Their gifts help your work to carry on.



Dorothy Nevils, Vice President

3,000+ Women from 65 synods have returned home recently, unpacked at least most of their clothes, caught up (partially) with things that just don't get done when the woman's gone, and let out a collective sigh of relief and remembrance.

Women have "Come to the Waters," and returned home, bathed in a newness that few can imagine. That spirit will doubtlessly spill over into the respective units, clusters, and synodical organizations. Let it.

If a woman from your unit or cluster attended Triennial, breathe in— nay, gulp—the new ideas, perspectives, experiences she is able to share. Let it be a source of new life and enlightenment. Now, while she spills over, drench yourselves in freshness.

Let this triennium be a start of a life like you've never experienced for your unit, your cluster! Invite those who went to share what they've learned, not only with their own congregations...invite them to your "house," to share with your "family" of women. They have so much to add to your cluster events.

Then let the enthusiasm spread so that it washes over into 2009, where it can continue to grow through our Biennial Convention.

Share the new life. Share the joy. Share the spirit. Share the BOLD!

KINswoman

The *KINswoman* newsletter is a publication of the Indiana-Kentucky Women of the Evangelical Lutheran Church of America (ELCA). This publication facilitates communications of the I-K Women of the ELCA by sharing ideas and programs of individuals, as well as our Clusters, Congregational Units and (SWO) Board.

The *KINswoman* is published 3-4 times a year by the Synodical Women's Organization of IN-KY Women of the ELCA, Jill Watson, President, and online at iksynod.org/ministry/WELCA/WELCA.asp

Send all articles, photos, questions, or subscription requests to **Dorothy Nevils**, Editor (See below.)

Permission to photocopy this publication for distribution is given for all ELCA members and Women of the ELCA. All others must cite attribution of publication.

Indiana-Kentucky Synodical Women's Organization Board for 2007-2009

Jill Watson, President; Evansville
1641 Scarlet Oak Drive
Jasper, IN 47546
812- 634-9244
jill.watson1@insightbb.com

Dorothy Nevils, Vice President
KINswoman; NW
575 Johnson Street
Gary, IN 46402
219-886-0201
maslivend@sbcglobal.net

Barbara Dietz, Secretary; NC
1917 Denslow Dr.
South Bend, IN 46614
574-299-0117
bdietz59@sbcglobal.net

Florence Bright, Treasurer
2619 Lindsay Avenue
Louisville, KY 40206
502-897-7367
ffbright@yahoo.com

Cheri Cupa, Leadership, Young Women; SE, Evansville
RR7 Box 1564
Bloomfield, IN 47424
812.384.7389
c_r_horse@yahoo.com

Bonnie Kroening, Cluster Coord:
So.; SC
Mission Resource;
10543 Dove Chase Circle
Louisville, KY 40299
502-245-1020
willandbon@insightbb.com

Jennifer Faust
1810 Oak Street
Linton, IN 47441
812-847-9348
Jen.k.faust@gmail.com

René Siria, Convention; EK
108 Old Station Road
Frankfort, KY 40601
502-848-4299
renersiria@yahoo.com

Phyllis Thompson, Cluster Facilitator
North; NE
4634 Morning Wind
Fort Wayne, IN 46804
260-436-5546
past40@att.net

Elizabeth Metcalf, non-voting appt.
8003 Brookglen Ct.
Louisville, KY 40299
fabuliz10@yahoo.com
Young Women

Deb Rieselman, non-voting appt.
134 Center
Erlanger, KY 41018
859-727-3839
deb.rieselman@uc.edu
Triennial Gathering Promoter

This space reserved for Mrs./Miss/ Ms. R. U. Willing
Call Jill Watson (above) to claim your spot!



Barbara Dietz, Secretary

Board Briefs
6-28-08

- The Board met at Resurrection Greenwood, IN.
- Jill shared resignation of Jan Smith; need replacement for Global Missions.
- Leadership training needed for the cluster coordinators; units want workshop at convention re what Women of the ELCA does, completing forms, programs available, funds, etc.
- Treasurer wants to discontinue practice of sending unit and cluster offerings to synod office, citing irregular schedule of forwarding to SWO
- Bible studies: "Water, Water, Everywhere"; spring, "It's Not Easy Being Jonah." Study packets to include leadership and Convention info
- Send gathering & special events photos, programs, etc., to historian/archivist, Martha Weber, 2003 Lindenwood, Ft. Wayne, 46808, following events
- Trinity English, Ft. Wayne, donated \$3,500 from Women of the ELCA, and \$7,500 from the American Association of University Women to the Wittington Home for Girls through grants.
- Mission response: Indiana Lutheran Disaster Response through June, 2009
- Leadership book being developed
- Finance chair, global mission chair, and someone from Indy needed on board; consider needs of leadership training, young ministry, campus ministry sites
- Jill set up "Bold Women Stop Here" table at Assembly; two convention reservations given
- Convention theme: "Your River of Faith," Eccl. 1:7, "All rivers run to the sea; yet the sea is never full"; next meeting September onsite; checking site for 2011 convention
- *KINswoman* to be quarterly after updating files, increased e-mailing
- Fall training sessions priority, 2-3 clusters together preferred, or afternoon of fall gatherings devoted to training; 2007 convention mandate.

Women of the ELCA Joins the Women's Funding Network to Help End Poverty

by Barbara Dietz



(Statistical info from Women's Funding Network)

The numbers are staggering. Globally, seventy percent of people in poverty are women and children. Approximately 1 billion people live on less than \$1US a day; 2.6 billion (40% of the world population) live on less than \$2US a day. In the United States, 14.6 million women and nearly 13 million children live below the poverty line.

The **Women's Funding Network** is a global association of more than 128 women's funds and partners investing in women by providing grants that empower women-led solutions that impact women and their families. The main funding focus is to dismantle poverty. For information about this organization, visit <http://www.wfnet.org>

Chris Grumm, president of the Women's Funding Network, addressed the Triennial Gathering to ask congregations across the country to help stop the cycle of poverty.

From now until **World Poverty Day (October 17th)**, the Women's Funding Network is joining the **Good Deed Foundation** on a "**One Simple Act**" campaign to recycle old and used cell phones. In addition to keeping the phones out of landfills, funds will be generated for programs that support women and children. Examples of such programs are those that provide financial literacy training, grants to start small businesses, vocational job training, and advocacy for increased access to health care, fair wages, and adequate and affordable child care. The goal is to recycle *one million cell phones*.

Your Women of the ELCA unit can participate by contacting www.GoodDeedFoundation.org/ recycle to receive a *free postage-paid envelope or collection box*. Each box holds approximately 25 phones, and you can order as many as you think you will need.

Collect at church, at work, anywhere! Please join in this campaign to help our sisters and their families begin a better life.

For additional information about **World Poverty Day**, visit www.womenfightpoverty.org/



Get to know...

Bonnie Kroening, who serves as Mission Resource person with Phyllis Thompson. She also serves as Cluster Facilitator for the southern end of the synod—South Central, Indianapolis, Evansville, Eastern Kentucky, and Southeast clusters.

"I am very pleased to serve on the I-K Synodical board. Attending cluster meetings I will get to know many more women who serve our Lord.

"Christ in Louisville has been my worship home for twenty-nine years. I am president of our Women of the ELCA unit, chair of our pre-school - kindergarten committee (which celebrates 50 years in 2008), and chair of the Fellowship Planning committee. All these groups have great people to work with.

"As my husband and I visit churches in our travels, I always look to see what other women's groups are doing, and sometimes am able to bring home new ideas, plus pass on ideas we have to them.

"This year's theme is 'Our Precious Gift of Water.' Phyllis Thompson has sent out the recommended Bible study material for fall cluster events. As soon as you receive your materials, you should begin planning your fall events.

"Be sure to let Phyllis and me know of your dates. You can contact me via e-mail at willandbon@insightbb.com, and Phyllis at past40@att.net. We are available to help with your planning."

“Women Touched by Grace”

Did you read your July issue of *Lutheran Woman Today*? In it Pastor Angela Shannon of Trinity English Fort Wayne explains what it means to be “touched by grace.”

Indiana Kentucky Recipient of Cronk Scholarship for Lutheran Lay Women



During an opening seminar for the Lutheran Deaconess Program at Valparaiso, Nancy Walter became aware of scholarship opportunities offered by the Women of the ELCA.

Checking the website, she found that she qualified for the Cronk Scholarship, a renewable, scholarship awarded to Lutheran laywomen whose education has been interrupted by a two-year period since high school graduation.

After downloading and filling in the application, which required writing a few short paragraphs about her goals and why the Women of the ELCA should invest her, Nancy obtained recommendation letters from her pastor and a friend, and sent the application off.

To her very pleasant surprise, Nancy was chosen to receive \$1000 per year! The award will be split, with half being sent to the LDA and the other half directly to her pending verification of her classes.

Nancy lives in Schererville with her lawyer husband Jack and two cats, Belle and Abby, “who are firmly in charge!!!” She has been employed by the federal courts for some 27 years.

Says Nancy, “I am so grateful to the Women of the ELCA for affirming and investing in me! If you’re thinking of continuing your education, please be sure to check out the Scholarship section of the Women of the ELCA web page for the many opportunities available!”

Nancy has already proven an excellent investment for the Women’s Organization. She has lent her talents and boldness to helping the women of Holy Shepherd get an active unit started. (See “Hats Off,” p. 5. You may also check out Jul/Aug *Northwex* by visiting iksynod.org. Click on [our ministries](#), go to [IK Women of the ELCA, NWIC.](#))



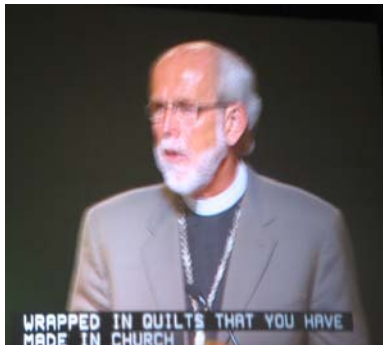
Are you going to Maryland?

If you do, please go to the **Lutheran World Relief Headquarters** at 700 Light Street, Baltimore, Maryland, and see the beautiful “**Good Samaritan Quilt Plaza**” where you

will find *two bricks* donated by the **IN-KY Synod Women of the ELCA**.

These bricks were purchased last year at our convention. We made over 700 Health Kits at the convention, and we donated \$1,000.00 to LWR to help pay for the cost of shipping those and other items wherever they’re needed around the world.

Another tidbit of information: *At the Triennial Convention, Bishop Hanson* commended the women for all the

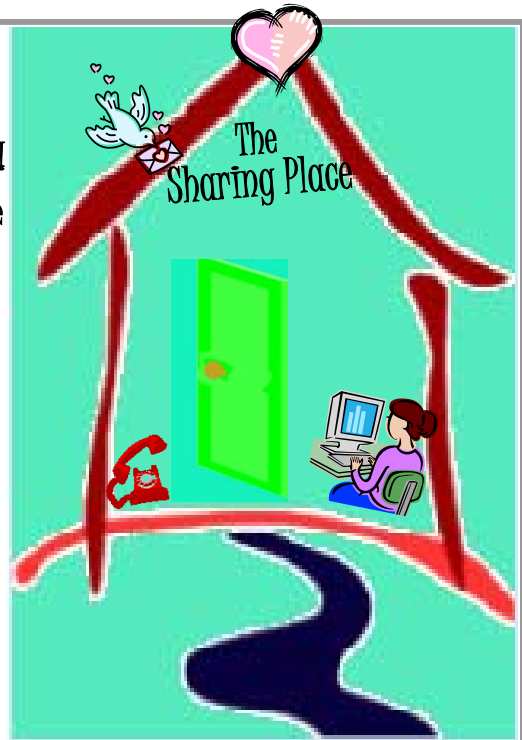


quilts they had made for LWR. On his recent trip throughout Africa, he saw, over and over again, men, women, and children with quilts made by the women of the Lutheran Church under their arms.

What a powerful witness for Christ!

Keep up the good work, sisters. You are doing such a tremendous ministry!

The door’s open, and so are the lines! Plus we have e-mail and snail mail. We’re waiting for a visit from you to the **Sharing Place**. Let us share



your ideas, your stories, your joys with our I-K Sisters!

.....
Hats off to Darlene Deck, once (fairy godmother)



and forever a Women of the ELCA diamond! SWO President in the formative years of the organization, she’s still practicing her leadership skills, currently guiding Holy Shepherd of St. John, IN, through the “activation” process. Helping out are Carol Wagner, former SWO board secretary, and Annette Holtan, NW Cluster Coordinator.

Holy Shepherd will have their planning session August 20, at 8 P. M. We send a synodFUL of love, prayers, and best wishes to our newest sisters, ready to find their BOLD! ALLELUIA!

Did you get a letter from Jill asking if you wanted to stay on the mailing list? We’re purging our list to remove addresses that are not valid because of relocation, death, errors, etc., so that we may be better stewards of your funds, so it is important that you **respond as soon as possible**. We appreciate those who have done so already, and thank the women who have contributed \$4.00 (or more) to underwrite the cost of mailing the *KINswoman* per year. You can sign up for *KINswoman* via e-mail by emailing kinswoman@gmail.com, duplicate it for your group, or read and/or download it at www.iksynod.org.



The Hidden Hand of God: Wisdom Stories from Ruth, Daniel, and Esther

The wisdom stories of Ruth, Daniel 1–6, and Esther help us think about our call to discipleship in the complexity of today’s world. You will see three recurring “H” themes throughout the study.

Hesed is a Hebrew word meaning extravagant loving loyalty that goes beyond the expected. Exploring it in these books will help us to examine how God is calling us to express **hesed** in our lives.

Heroic actions involve great risks to the one performing them. They are brave actions for the sake of others. Studying the leading characters in these stories will challenge us as we think about the risks God calls us to take as a part of faithful discipleship.

Hidden hand refers to the often unseen presence of God in all three books. Discovering how God works in these stories allows us to reflect on how God sometimes seems hidden in our lives or in the lives of those we love—and how we are called to live through such times.

As we study these books together, we pray that we grow in confidence of God’s never-ending love for us and that we gain courage to take the risks God may be calling us to.

This Bible Study can be found in *Lutheran Woman Today* beginning in September. Each issue of the magazine, through May, will offer the Bible Study for personal use or in group settings.

“Share the Wisdom” with a friend. I challenge you to begin a new group at your church if you don’t already have a study group. Groups of any size will do. Remember that where 2 or 3 are gathered God will be with you—*just as He is with you as you study the Bible alone*. Isn’t God Great???

Jill

Simple acts that can lead to a world of good

by Inez Torres Davis
(Selections from the July issue of *Interchange*)



...Advocating for and supporting women and children living in poverty has been a focus of Women of the ELCA since the earliest days of our organization. We made the connection between environmental degradation and women and children living in poverty, both domestically and globally, long ago; and now we have another means of addressing poverty—through our partnerships with the Good Deed Foundation and the Women’s Funding Network.

The Good Deed Foundation’s tag line is “A simple act. A world of good.” And it’s true. By purchasing products or services with the Good Deed logo (see graphic) we join in lifting women and children out of poverty. Good Deed donates 100% of its profits after taxes to community organizations that benefit women, families, and the environment...

The Good Deed logo allows you to purchase with confidence, knowing that the product is Climate Friendly™. There are currently several ways to become engaged with Good Deed: The first is through purchasing Cabot cheese... The second is with Good Deed/Green Lights CFL light bulbs. Ten percent of the purchase price goes to Good Deed... The third way, **which will be a major focus in the coming months**, is to get involved in the *cell phone recycling project* (See *Women of the ELCA Joins*, page 3). The Good Deed Foundation will send you a postage-prepaid envelope for up to seven phones, or a free collection box to use in congregations, schools, businesses, hospitals, or anywhere else that people come and go. Once full, call FedEx for a *postage-paid pick up!* Easy as pie.

You do know why we want to recycle used cell phones, don’t you? According to the Environmental Protection Agency (EPA), recycling one phone eliminates **66 pounds of CO₂** from entering the atmosphere! Recycling 1 million of the 100 million cell phones lying around would reduce greenhouse gas emissions equal to taking **1,368 cars off the road for one year**. And if we were to recycle all 100 million cell phones that need end-of-life management, we would **save enough energy to power more than 194,000 U.S. households with electricity for one year!**

Note from Jill: I bring this article to your attention because, following the Triennial Convention and Gathering in Salt Lake City, we were made aware of this *simple but enormously effective way* that we can make a difference for women and children in poverty, and also for the environment. We want to see how our IK Synod can do our part to help. Suggestions: Team up with youth groups from the congregation, place collection boxes around town or at church, and challenge members to see who can collect the most phones.

Come to the Waters: The Way it Was... from Those Who Went (Hey, where are the checkered vests...?)



Representing IN-KY were (back row) Pat Teverbaugh (1st English, Mishawaka); Deb Rieselman, Gloria Dei, Erlanger; Jill Watson, president (Christ, Jasper); (front) Florence Bright, treasurer (St. John, Louisville) Margo Parker (Bethel, Gary); and René Siria, (Hope, Frankfort, KY) board member.

For “newbie” **Margo Parker**, going to Triennial was a “virgin voyage.” She termed the experience “spiritually and emotionally uplifting... It was truly an awesome experience to see the friendship, camaraderie and love shared among so many women from different parts of the country...” She came away thoroughly immersed in **bold** waters, and anxiously awaiting the 2009 SWO convention.



Checking in and “checking out,” **Rene** doubtlessly looked at things with a different eye than most of the delegation from Indiana and Kentucky. She’s responsible for planning conventions for I/K in 2009, and is looking ahead to 2011.



As a first-time delegate to the Triennial Convention, **Florence** was “in awe of the whole event. I had no idea what the *Ecclesiate method of voting* was, and totally overwhelmed by the fact that any delegate present could have her name in nomination for president. Sixty candidates on the first ballot! Of course,



there were the logical candidates, and they were the popular choices. Same way with the vice-president.

“We actually had names for the secretary and treasurer. Then came the 17 board members from 46 candidates.

“*Urge each of you* to prayerfully consider being nominated as a delegate at our convention in September, 2009. It is a very humbling experience. I feel so blessed that I was voted as your delegate to represent your I-K Synod,...and blessed to have had conversation with *so many* Lutheran Women from *all over the US*, and to share the wonderful stories about our own units in the Women of the ELCA. We truly are **bold women!**”

Rev. Angie Shannon,

Trinity English, Ft. Wayne, lead chaplain for the Gathering, brought the women together around the font in a service of Affirmation of Baptism.

First-Time Gathering Attendee in Awe of the Proceedings By Barbara Dietz

Ho, everyone who thirsts, come to the waters Isaiah 55:1-2

The Gathering was amazing from the opening worship to the closing ceremony. Visualize walking into a hall filled with over 2,000 women. Others, waving long flexible poles with colored ribbons representing water, walk among the audience as the clergy participating in the Eucharist proceed to an altar on a raised stage. (p. 9)



Meet our new president. . .

Beth Wrenn, Kill Devil Hills, N.C., was elected president for the next three years on the third ballot at Triennial June 9. She succeeds Carmen Richards of Hope, N.D., and is a member of Kure Memorial Evangelical Lutheran Church, Kure Beach, N.C.

In her acceptance speech, Beth said, "When we leave this place, we must take these life-giving waters with us and share our mission and our enthusiasm with all women.

"There are women who have never been a part of this organization because they don't know who we are," Wrenn said. "They don't have any idea what strong advocates we are for those who cannot speak for themselves, so we have to share that good news. We have to be willing to accept change and to listen to women, hear their stories, let them know that there's a place for them in this organization."

(Con't from p.8) Below the altar, on the floor level, was an enormous glass baptismal font. This was filled with water poured from large glass vessels. It was a visual affirmation of the Gathering's theme, "Come to the Waters."

Speakers united those attending to purpose and power. Keynote speaker Joan Chittister challenged us to restore religion's principles of nonviolence. Too much violence and too many wars occur in the name of "religion." We need to take a stand. As she said, "If you wonder whether your life's work is done, and you're still alive – it's not."

Rev. Heidi Neumark said we owe a debt of gratitude to the bold, courageous women who have fought against injustice and paved the way for others. She had us chanting the "mantra," Mahlah, Noah, Hoglah, Milcah, and Tirzah. These, the only women named in the Book of Numbers, were allowed to inherit land from their father because he had no sons during a time when women had very few rights. "Look around sisters. If God can change the world with five women, let's not underestimate what that same God can do in, with, and through all of us".

In addition to the general gatherings, workshops, and exhibits, there was time to participate in preparing in-kind gifts, learning about causes that need support, touring the city, and meeting women from all over the country. It was great to "compare notes" about units, but mostly it was wonderful to establish new friendships. The first woman I met, from Yuma, AZ, was related to a member from my church! Now that's a small world.

I left for home after four days, tired but excited to be numbered among the **bold** women returning to their communities to begin

what God asks of us.

Please put Spokane on your calendar in 2011.

This is an opportunity that no one should miss!



An open letter from your KINswoman...

Dear Sister,

I am the *KINswoman*. I get my name from the synod, IN(diana), and K (entucky), and from the relationship its women share. I am the message of your KIN, your sisters.

I'm writing to you because something is missing in my life. I'm feeling off-balance, like one whole side of me has gone numb. You know how it feels when your foot goes to sleep? You know it's there, but it seems unable or unwilling to hit the floor and help prop up the rest of the body. That's what's happening to me. I know you're there, but I'm not feeling you... I'm missing you.

See, when I was born, they named me and gave me a job. They said, "You're the communication center."

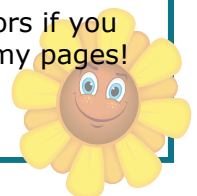
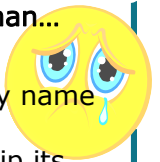
I thought, "A center is in the middle. I get it... I'm to be the way the board speaks to the women...and the women speak to the board... and the women speak to each other."

I really want to do a good job. I want to carry news back and forth across the synod...but I need you to be that other foot, alive, awake, and contributing.

Please help me! I don't want to get sent across the synod with one-way messages. Please let me speak for you! Let me carry your stories. Let me introduce your women. Let me show your pictures like a doting grandmother.

Do that for me and I'll be tickled ivory—and all sorts of other colors if you get me via e-mail. I'll just flip my pages!

Lonely and waiting,
U. R. *KINswoman*





KINswoman

Indiana-Kentucky Evangelical Lutheran Church in America
Synodical Women's Organization
575 Johnson Street, Gary, IN 46402

DATED MATERIAL
For immediate delivery

Go **GREEN** for groceries!
Take your bag. Take your groceries.
Visit reusablebags.com and see why.

"Your River of Faith"

Ecclesiastes 1:7: All rivers run to the sea; yet the sea is never full...

2009 BIENNIAL CONVENTION

of the Indiana-Kentucky Synodical Women's Organization

Louisville, Kentucky, the beautiful "River City," welcomes you to the banks of the Ohio River Friday, September 18, through Saturday, September 19, for a weekend of learning, worship, and fellowship.

Plan now to be a part of this synod-wide gathering of sisters in Christ. Information will be reaching your leaders soon.

If you'd like to be a delegate or alternate...or if you'd just like to come along, get started on the planning. You've got a year to get ready... *Get ready!*